



真
MAJIME

真 MAJIME

"Majime" is a Japanese word that can be translated as serious, earnest or diligent. It is often used to describe someone who is studious, dedicated, and takes things seriously. The term can be applied to various aspects of life, such as work, studies, or personal endeavors.

In Japanese culture, being "majime" is generally considered a positive trait, as it reflects a responsible and committed attitude towards tasks and responsibilities. It implies a person who is reliable, thorough, and meticulous in their approach.

The concept of "majime" is often associated with qualities like discipline, focus, and a strong work ethic. It is valued in professional settings, where individuals who are "majime" are perceived as dependable and trustworthy.

The Building

We want to create an open, welcoming and personal atmosphere. Feel welcome to stop by for a coffee and a Teams meeting in the lobby whether you are working in the building or just passing by. We want to give you an experience to remember!

The building will be developed with the highest sustainability standards and encourage to health and happiness. Here you will discover how low tech solutions meet high tech innovation.

The City

Lund is a great spot for business startup. Among the companies that have established in the city are Saab, Kockum, Axis, Tetra Pak and Alfa Laval. Scandinavia Science Village is a global technology hub with the research facilities of ESS and Max IV - a magnet for business investment



SHORT FACTS

CITY:	LUND
PROPERTY OWNER:	SKANSKA
LEASE SQM:	300-7000 m ²
NUMBER OF FLOORS:	5
ZONING PLAN:	ADOPTED
COMPLETION:	2025/26



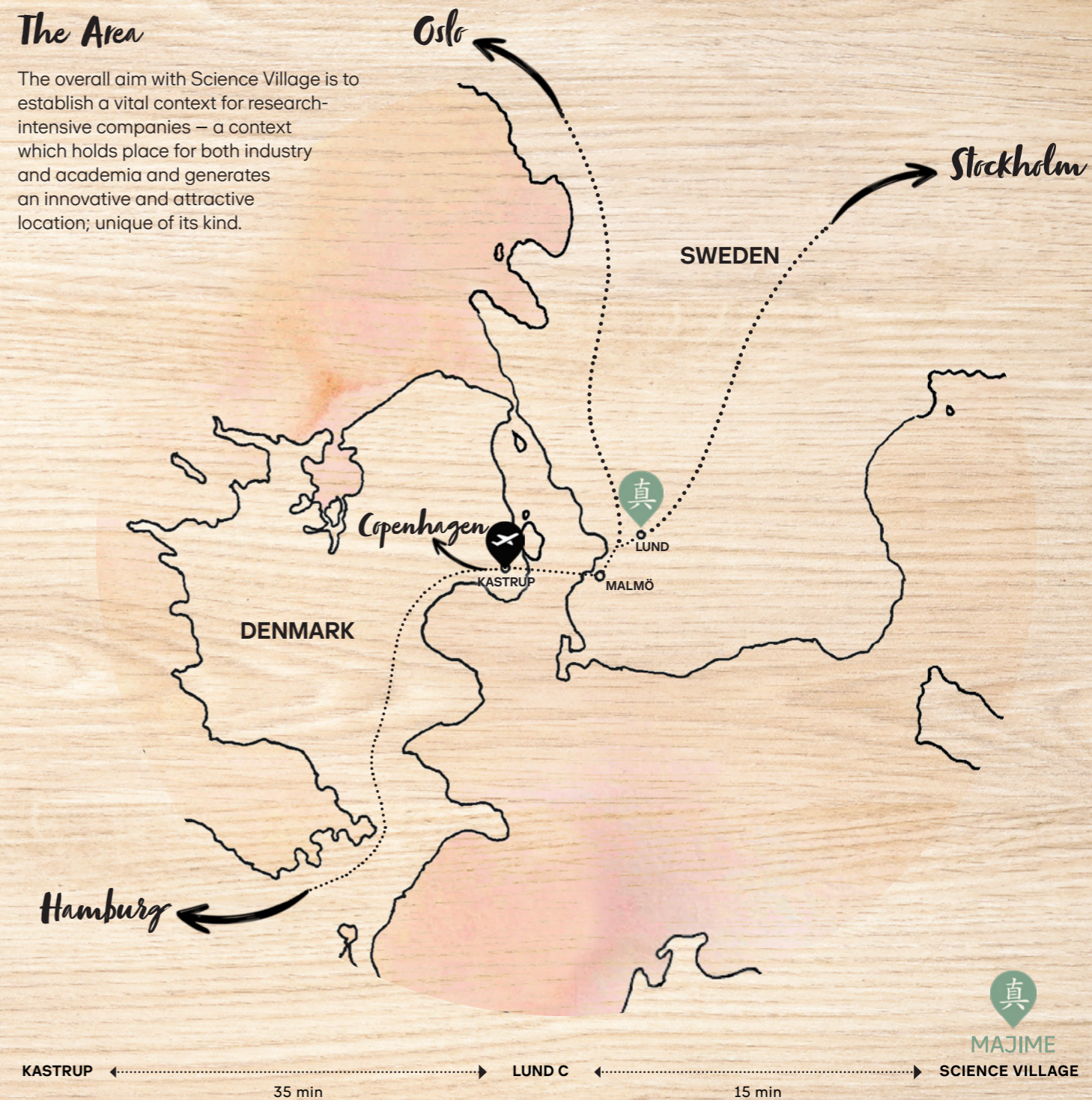
Science Village

Science Village is situated on property inbetween the world-rekowned science institutions MAX IV and ESS, the land owner (Science Village Scandinavia, SVS) is co-ownership between Lund University, Lund City and Region Skåne.



The Area

The overall aim with Science Village is to establish a vital context for research-intensive companies – a context which holds place for both industry and academia and generates an innovative and attractive location; unique of its kind.



“The best way to predict the future is to create it.”



Low-tech meets High-tech



Contact

EVA ZDOLSEK

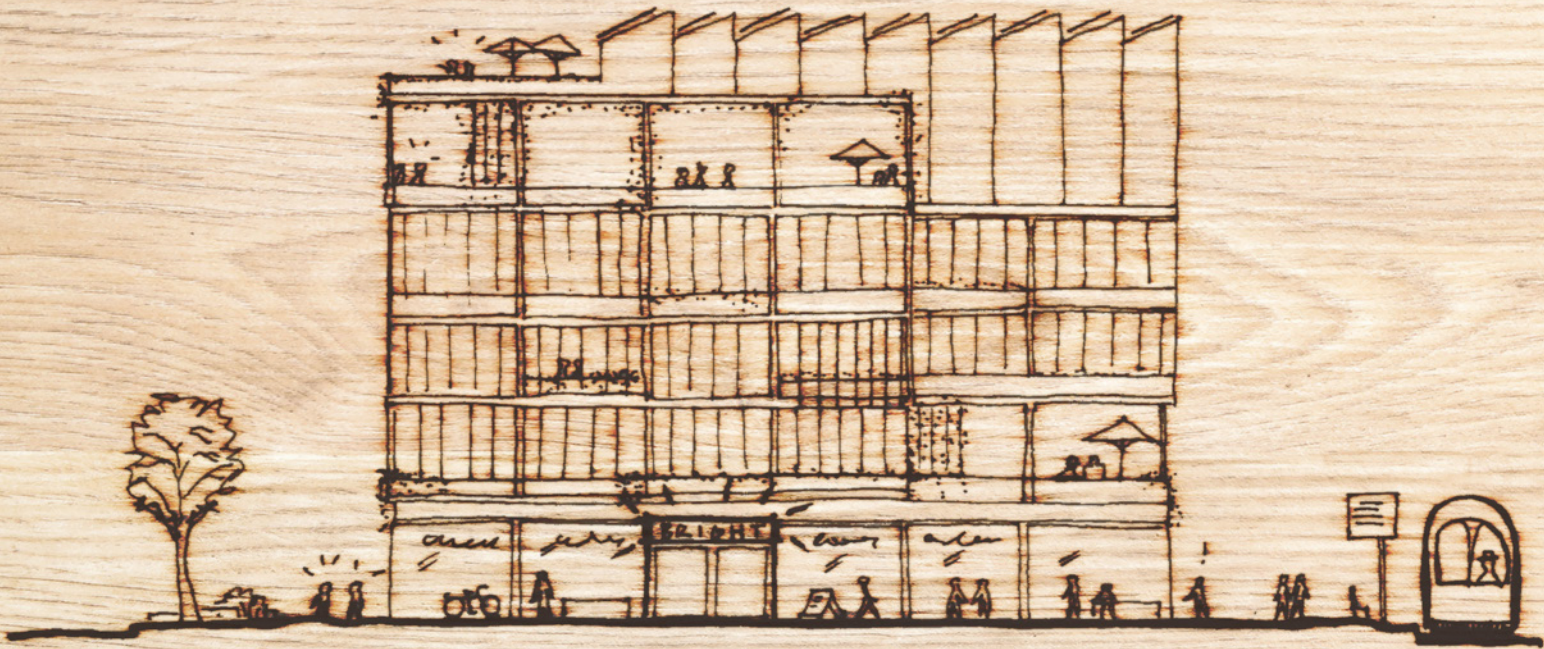
+46 70-830 71 96

EVA.ZDOLSEK@SKANSKA.SE

HANS FRANSSON

+46 76-844 85 59

HANS.HF.FRANSSON@SKANSKA.SE



SKANSKA